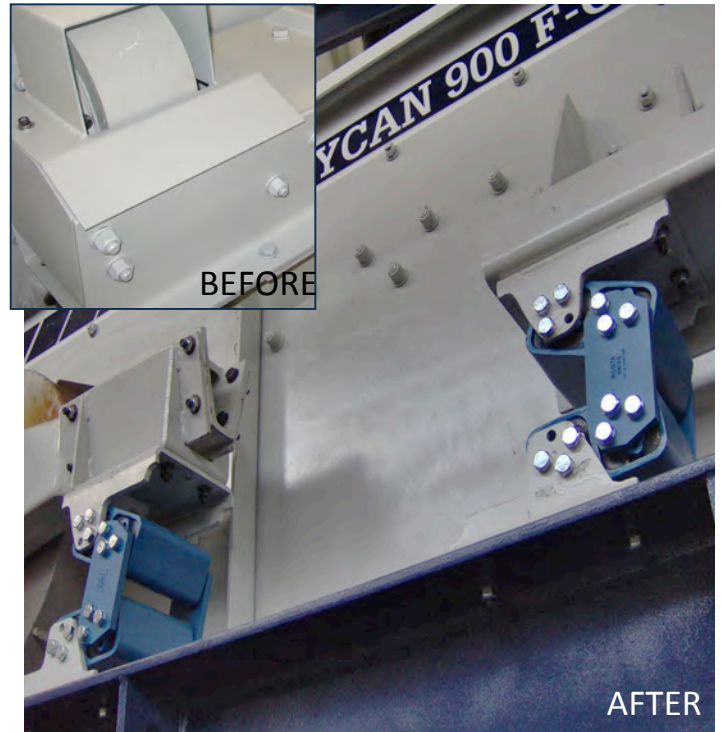


SCREEN BETTER

TY-RIDER Suspension System



On Two-Bearing Concentric Screens including TYCAN T-Class and Ty-Rocket, the springs allow for excessive movement and damage when not replaced. The **TY-RIDER Suspension System** eliminates lateral movement, reduces the impact of critical frequencies during start-up and shut-down, and provides easy access for repairs.



On Four-Bearing Eccentric Screens including TYCAN F-Class and Ty-Rock, the shear rubber mounts are subject to tearing, need to be replaced in pairs, and are very difficult to access. The **TY-RIDER Suspension System** lasts much longer than traditional shear rubber mounts and provides easy access for repairs.

1-800-325-5993

www.wstyler.com

Patent Pending

SCREEN BETTER

TY-RIDER

Suspension System



Customer:	Phone:
Location:	Fax:
Contact:	Date:
PO #	Tyler Rep:
Quote Price:	

Standard TY-RIDER Specifications

F-Class

BEARING SIZE	OLD NO:	NEW NO:	Weight Class (lbs)
160	F-1100	F-1600-X	25,000 to 35,000
140	F-900	F-1400-X	20,000 to 25,000
120	F-800	F-1200-X	20,000 to 25,000
100	F-600	F-1000-X	10,000 to 20,000
80	F-300	F-0800-X	3000 to 7000

T-Class

160	T-1100	R-1600-X	25,000 to 35,000
140	T-990	R-1400-X	20,000 to 25,000
120	T-880	R-1200-X	20,000 to 25,000
100	T-660	R-1000-X	10,000 to 20,000
80	T-330	R-0800-X	3000 to 7000

L-Class

160		L1	25,000 to 35,000
140		L1	20,000 to 25,000
120	800	L1200-X	20,000 to 25,000
100	600	L1000-X	10,000 to 20,000
80	300	L080-X	3000 to 7000

S-Class

55mm	110	T-110R	2000 to 5000
80mm	300	T-300R	5000 to 10,000